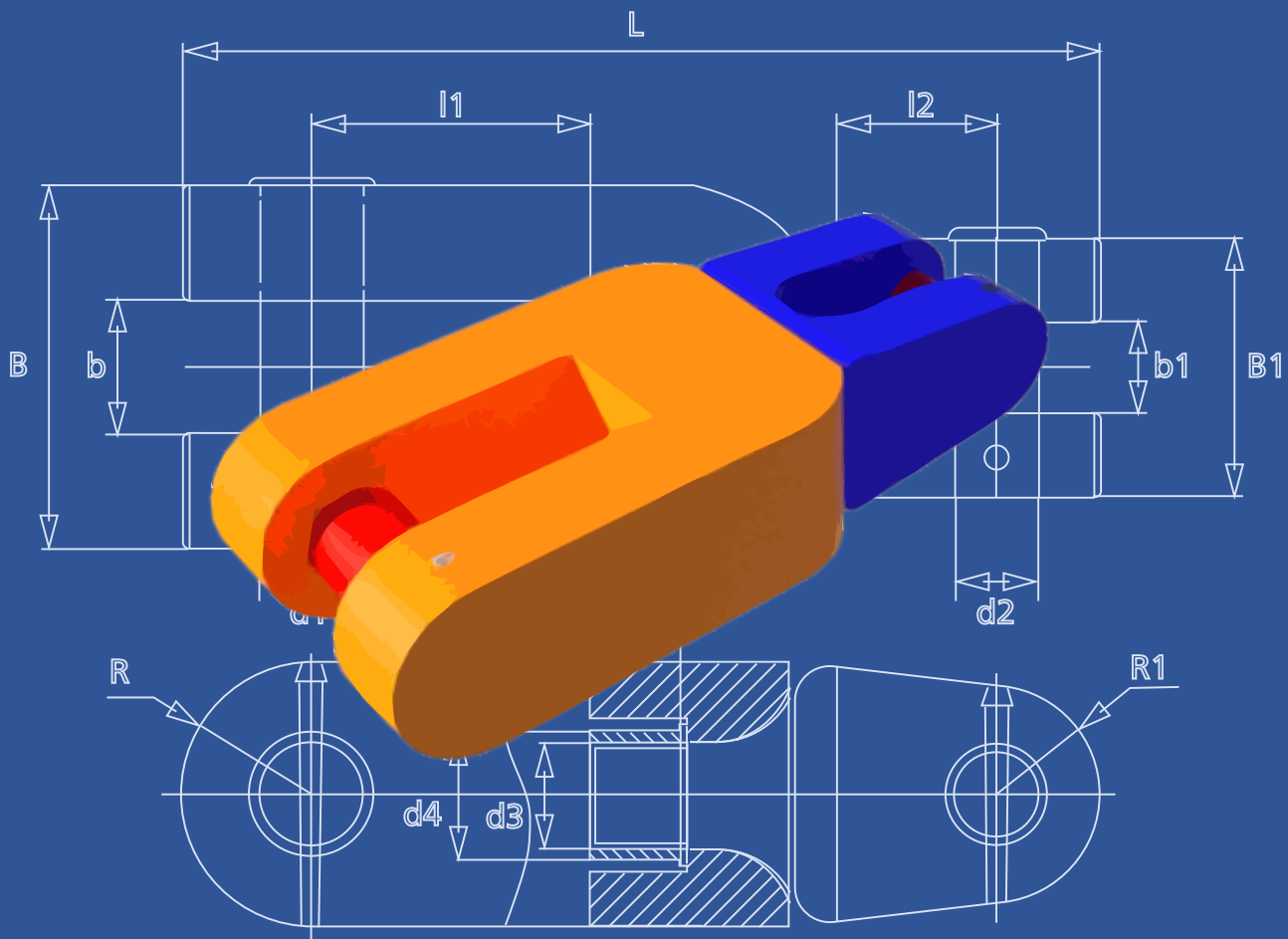
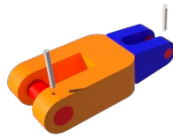
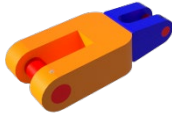


ASSEMBLY OF SWIVEL SHACKLES

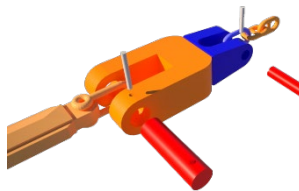
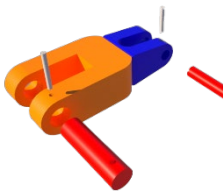


Assembly – Swivel Shackle



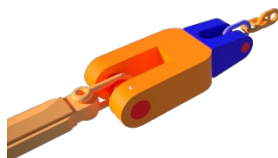
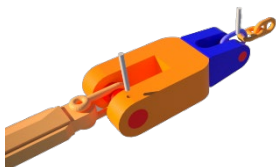
1 – Remove Taper Pins

There are two taper pins (white) securing the bolts (red) in the swivel. With the help of a pin punch and a hammer, or other instruments, they can be easily removed.



2 – Remove the Bolts

The taper pins are now removed, and the bolts (red) are now free to be removed. Now you can insert the anchor crown shackle on the large end (orange) and the adaptor link on the small end (blue).



3 – Re-insert the Bolts and Taper Pins

Now that the crown shackle and the adaptor link are in place, you can insert again the bolts into the swivel and the taper pins.

All instructions, drawings and recommendations are based on industry standards. Deviation margins, changes, and updates of procedures need to be taken in mind, this is your own responsibility and not from Castle Hills AS.