



**STOCK LIST**

**Second hand  
and  
surplus material**

***Summer 2024***

## FENDERS



### Yokohama Style Fenders

On photo Dia 3,3 mtr x 6,5 mtr length.



### DD-Type Rubber Fenders

We have all sizes in stock

60 – 100 – 125 – 150 – 200 – 250 –  
300 400 mm



### SLING Type Pneumatic Fenders



### Foam Filled Fenders



### Small pneumatic Fenders

Perfect for fishing boats and tugs.



### Old Tyres – painted

The cheapest form for fenders





### Foam Fenders

Dia 500 x 1000 mm

To use for anchor-handler and PSV.



DO Fenders, used 400 x 400 mm



### Arch Fenders



W type fenders – second hand



### Sylinder Fenders



ROLL FENDERS



## BUOYS



**Surface Buoys – 2000 kgs buoyancy**



Some fender buoys are small, and some are bigger. This unit is 2100 mm Dia.



**Second hand surface buoys**

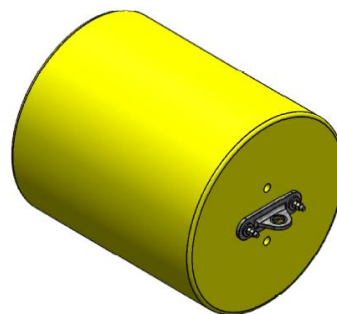
APB 2200 and 4400, Activa FEB 2000, Aqua 600, Aqua 850, LB 250  
Polyform and OVUN buoys in stock.



**10 tons Steel Buoys for mooring**  
3 hooks – SWL 110 tons each



**Foam filled Steel buoys**  
15 tons buoyancy



**Sub Surface Buoys**

## CONTAINERS AND HANDLING EQUIPMENT



### Second hand Mafi roll trailers

Sizes of 20 feet – 30 feet – 40 feet  
Load capacity up to 100 tons.



### Goose Neck

For handling Roll Trailers



### Containers

Storage containers  
ISO transport containers  
Isolated containers



### ADR ISO TANKS



### Isolated Containers 5,8 mtr long

With electric, and light.





## ANCHOR CHAINS



### Brand new studlink anchor-chain

All sizes in stock, grade 2 and grade 3  
Class certificates: DNV, LRS, ABS, BV.  
**USED CHAINS**



### Used Fish Farm chains

Dia 16 – 40 mm  
Perfect for small private docks.



### Dia 84 mm, grade R4.

Fully certified, second hand.  
DNV and ABS class.



### Second hand rig-chain

Dia 76 – 84 – 100 – 111 – 120 – 130 mm



### Dia 130 mm studless chain



### Dia 76 mm – R4

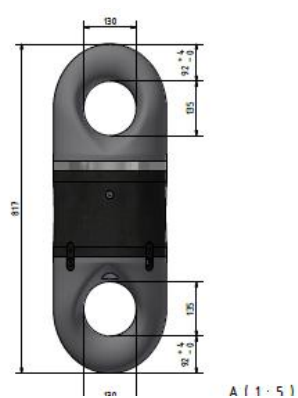
DNV Certified second hadn chain



## Swivels and H links



**H links for join dia 120 and 84 mm chain**



Dacmatech swivels  
Nautilus swivels  
De Haan  
Second hand



**H-Links for join dia 84 mm chain, R4**



**Y Links for dia 120 mm chain**



**H links for Dia 100 mm chain**



## SHACKLES



### Pear Shaped Shackles

On photo number 7 – grade 3  
Also other sizes and grade R4.



### SWL 600 tons GN Shackles



We have a lot of used shackles



### Safety Bow Shackles – WLL 55 tons

We have stock of WLL 2 – 200 tons



### Slim Kenter Shackles

Dia 84 – R4 and R5

Fully Certified with DNV.



A standard size kenter-shackle next to a giant size dia 172 mm, delivered from Castle Hills to the largest ship in the world.



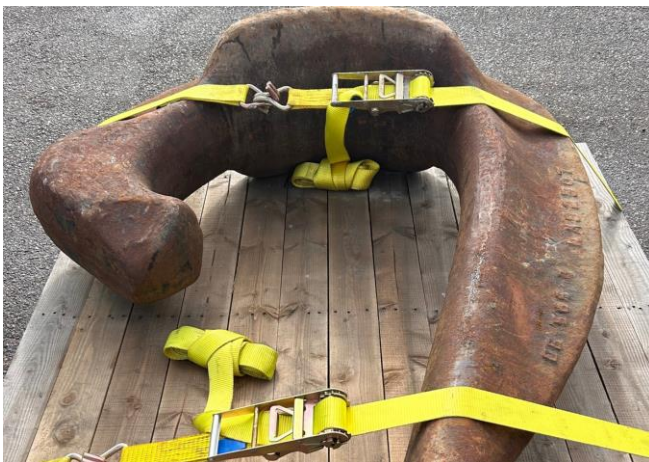
## CHAIN CHASERS



J Chasers – SWL 250 tons – Lock type.



Detachable chain chaser – SWL 150 tons



J Chaser Wide body – SWL 250 tons



GN Hooks



## ROPE and WIRE



### Second hand ropes

On photo dia 110 mm.

PP 8strand in red color  
23 x 220 mtr Dia 60 mm  
6 x 220 mtr Dia 64 mm  
10 x 220 mtr Dia 72mm



### Danline Rope – brand new



### WIRE-ROPE

We have excellent deliveries of wire-rope.

Brand new direct from factory  
And some second hand.

6 x 234 mtr Wire Dia 36 mm in stock  
6x36+IWRC, RHRL, Glav. With sockets.  
MBL 98,6 tons. Unused.



Dynema Dia 44 mm rope.



MBL straight 762 Mt  
Effective working length 55.0 mtr



Dia 76 mm wire with sockets MBL 450  
T



Fiber rope Dia 165 mm.



Dia 64 mm  
Endless Grommet Dyneema  
MBL 490 tons

Dynema Dia 48 mm Rope, 12 plait  
braided. 110 mtr. MBL 163,2 tons.



Dyneema grommet Dia 168mm



## ANCHORS



**Ships anchors –**  
SPEK, HALL, AC-14, and more.



### **Flipper Delta anchors**

Anchors for barge mooring  
We have the original European made  
Flipper Delta anchors in stock in some  
sizes.



### **Plough Anchors**

Stingray – Sandig –  
500 – 750 – 1000 – 1500 – 2000 kgs

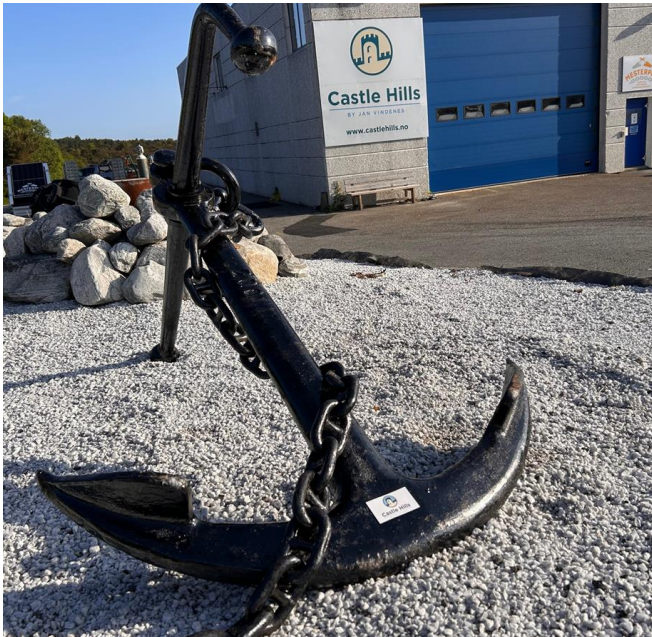


### **Stevpris mk6 anchors 12 – 15 tons**



We also have similar anchors,  
same design – other name – same use.





Stock anchors for decorations

## DECK EQUIPMENT



Pamama Chocks – in stock

## BOLLARDS



### Tee Head Bollards

SWL 5 – 10 – 15 – 20 – 30 – 50 – 80 –  
100 – 150 – 200 tons in stock.  
All with anchor bolts.



### TOWING BRACKETS



## WINCHES



**Chain Gypsy Dia 84 mm for RR Winch**



**Cable Winch**

Karmøy Winch M361804.



**Hydraulic Winches**



**800Ton Hydraulic Winch**

Norwinch Group

Type: SV6A

No. S963

SPES. W955/87



## VARIOUS EQUIPMENT



**Pressure Blast Cabinet**

*BNP Series. Clemco 721-D. 2010 model*



**Ballast bars,**  
*Square ballast, Round ballast and iron ore.*



**Crude Oil Hoses**  
6 inch, 4 inch, 20 inch





### Chain Sinkers

Single links for old chain for sikers

Weights: 30, 40, 50, 100, 200 kgs each



### Fish Farm cages – steel



### Gangway –

Length: 6 – 8 – 10 – 12 – 15 – 25 - meter



### Orange Peel Bucket

15m3 capacity. SWL 7 tons

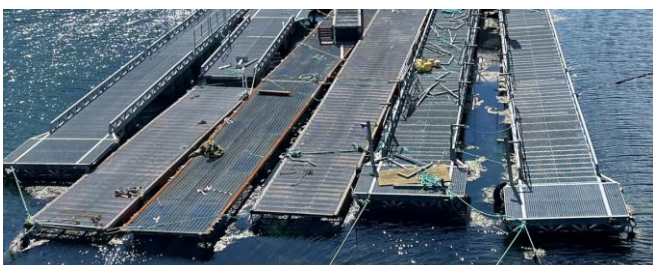


Item 109

### El Motor

3GB 352220-ADK, 254 kW

440 V, 1790 rpm, 490 Amp



### Floating Docks

12 meter long – 2,5 mtr wide

Can split in half





Item 111

### **ABB Induction Motor**

15 kW, 50 Hz, 415 V



Item 25-3

### **1600 KVA Hydro Electric Turbine**

Onshore, 2009, 50 Hz, 3ph



Item 11-4 2 units:

### **Triplex Shark Jaw H-350-N**

### **Triplex Shark Jaw H-700/S300**

Unused units, still in original packing.  
Full documentation is available.



### **SINKERS**

200 – 1000 kgs

**New sinkers from stock**



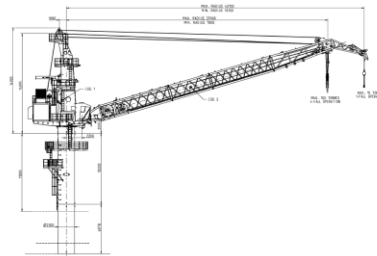
## **Reverse Osmosis Drinking Water**



## LIFTING GEAR



**Yale chain blocks – SWL 20 tons**  
We have many of these in stock.

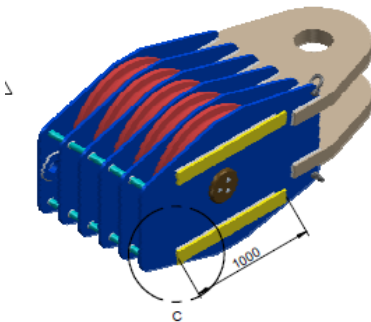


Item 5-10

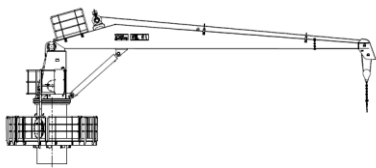
## Liebherr Offshore Crane

SWL 15 tons on 42 mtr

SWL 100 tons on 37 mtr



2 pcs Blocks WLL 500 tons  
5 sheaves



*Item 5-11*

## Offshore Crane

## DNV Class unused Norsok

SWL 5 ton and 13 mtr



## Billy Pughs

## Man transfer baskets





**A-Frame 10 tonn**  
Hydraulic sylinders, 210 Bar,



**Snatch Block**  
WLL 200 tons



**SL-9 Man ridding Davit – 1500 kgs.**



*Item 5-19*  
**ABAS Crane**  
SWL 5 tons -13 meter



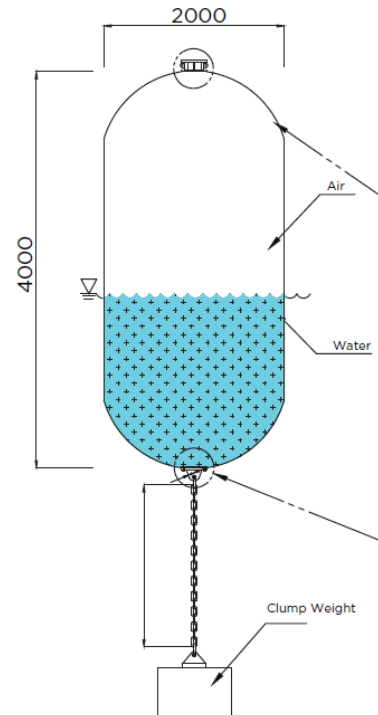


TTS Crane – 70 tons – CCLKO 2000-70-36,5



Noreq Acta Crane  
HHC 350-100/15-29

## Submarine Fenders



**Alu Bridge House**  
Can suit a boat or barge  
Can deliver in 2 parts