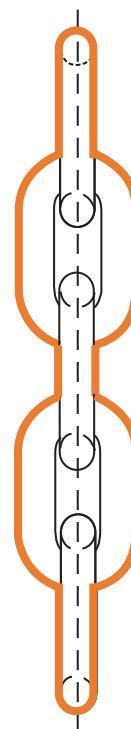
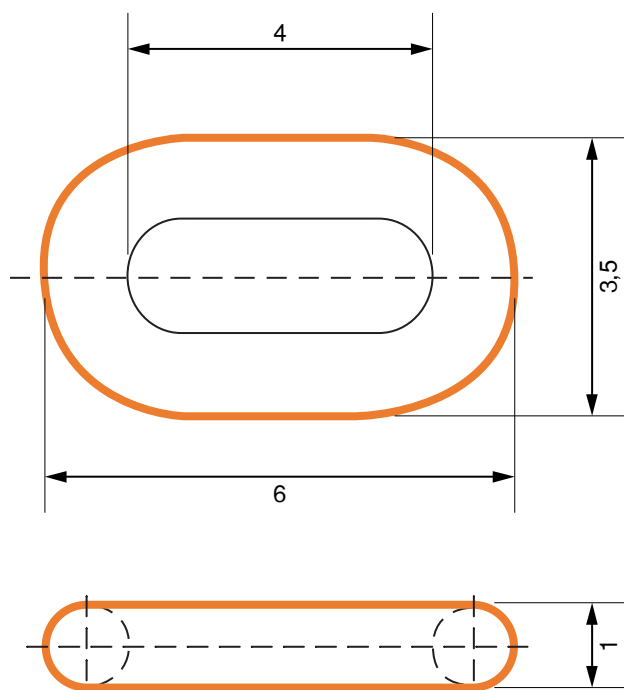




## ISO 1704 Modified – Studless Chain

Studless Chain for Aquaculture and Fish Farming



Dia	Pitch	Weight	Break Load Grade 2	Break Load Grade 3	Treatment
mm	mm	Kg/m	kN	kN	-
13	45 × 18	3.5	98		Tarred / Galv
16	99 × 32	4.5	132.5	184.8	Tarred / Galv
19	119 × 34	6.3	187	260.6	Tarred / Galv
22	127 × 34	8.6	290	349.4	Tarred / Galv
24	96 × 36	11.5	298.9	415.8	Tarred / Galv
26	104 × 39	14	350.8	488	Tarred / Galv
28	112 × 42	16	405.9	566	Tarred / Galv
30	120 × 45	18.5	467.5	649.8	Tarred / Galv
32	128 × 48	20.5	530.9	739.3	Tarred / Galv
36	144 × 54	26.5	672.3	935.7	Tarred / Galv
40	160 × 60	32	829.1	1155.2	Tarred / Galv
50	200 × 75	52	1239.6	1805	Tarred / Galv
60	240 × 90	71	1857.6	2598	Tarred / Galv

According to industry standards, the break load of hot pit galvanized chain is reduced approximately 15%.

Weight unit is Kilograms. All measurements in mm. Measurements, weights, and drawings, are based on industry standards. Deviation margins need to be taken in mind, this is your own responsibility and not from Castle Hills AS.

